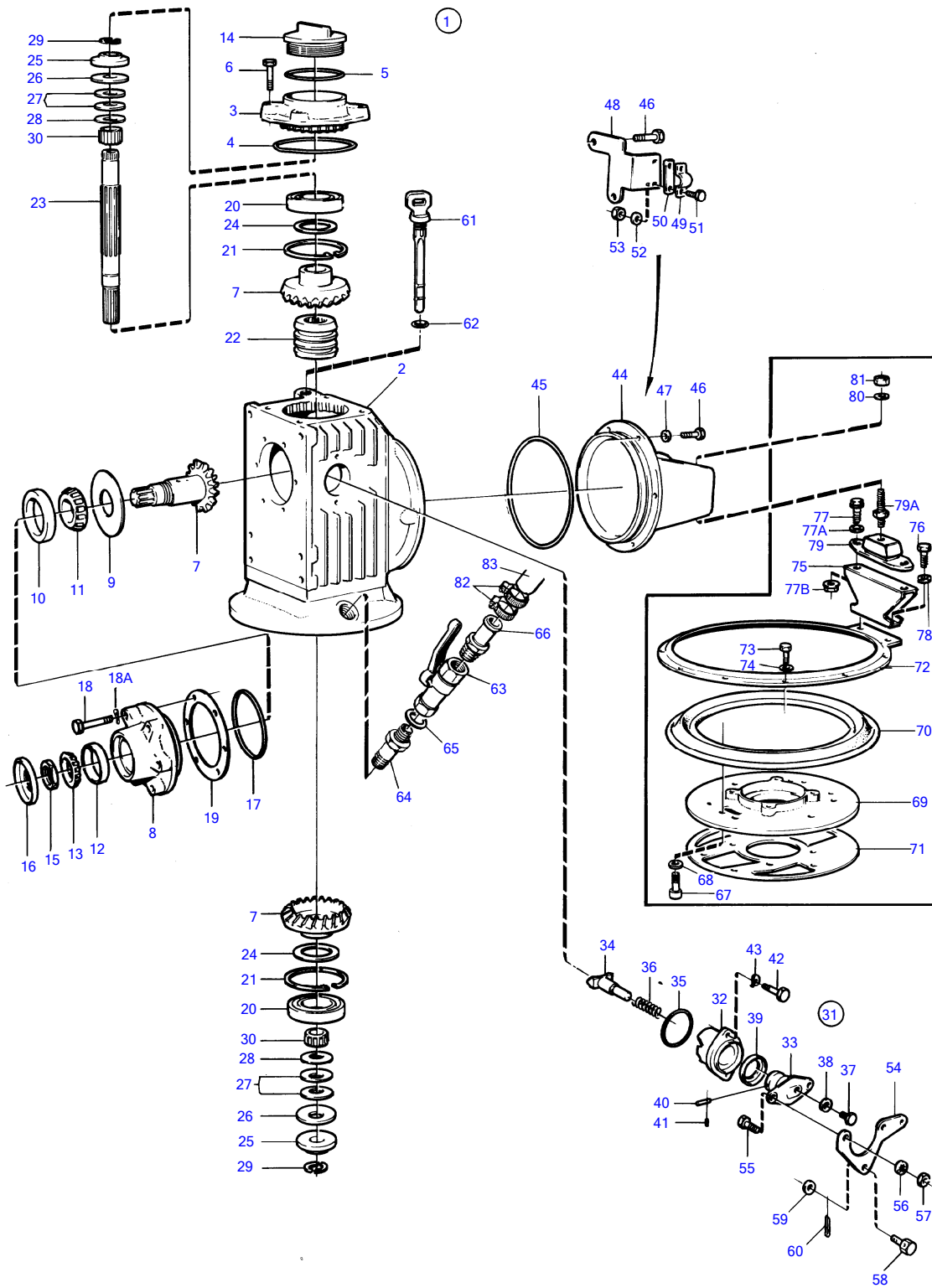


120S-E



120S-E

REF	PART NO.	QTY	DESCRIPTION	SEE SEC.	NOTES
1	873104	1	Gear		
2	873085	1	• Gear housing		
3	873123	1	• Cardboard tube		
4	949962	1	• O-ring		
5	1664473	1	• O-ring		
6	946671	4	• Flange screw		
7	873095	1	• Gear set		
8	872710	1	• Bearing box		
9	851621	1	• Turntable		
10	181302	1	• Cup		
11	181301	1	• Inner ring		
12	183750	1	• Cup		
13	183752	1	• Cone		
14	851754	1	• Filler cap		
15	(852485)	1	• Lock nut		Obsolete part
16	873094	1	• Sealing ring		
17	925093	1	• O-ring		
18	940101	6	• Hexagon screw		
18A	941906	6	• Spring washer		
19	851622	X	• Adjusting washer		TH=0.10mm
	851623	X	• Adjusting washer		TH=0.15mm
	851624	X	• Adjusting washer		TH=0.35mm
20	851756	2	• Bearing		
21	852190	2	• Lock ring		
22	873098	1	• Sliding sleeve		
23	873099	1	• Shaft		
24	852184	X	• Shim		TH=0.05mm
	84219	X	• Shim		TH=0.10mm
	949776	X	• Shim		TH=0.15mm
	84218	X	• Shim		TH=0.35mm
25	852079	2	• Lock washer		
26	852213	2	• Disc spring		
27	852080	6	• Disc spring		
28	852311	2	• Washer		TH=0,40mm
	852317	2	• Washer		TH=0,80mm
29	851629	4	• Lock ring half		
30	851757	2	• Needle bearing		
31	851661	1	• Shift mechanism		
32	851662	1	• • Bearing housing		
33	897816	1	• • Eccentric piston		
			• Bulletin P-44-1-7	P-44-1-7-EN	Shift mechanism, eccentric piston
34	851664	1	• • Dog		
35	925065	1	• • O-ring		
36	814184	1	• • Spring		
37	897711	1	• • Hexagon screw		
38	897871	X	• • Shim		TH=0,20mm
39	873291	1	• • Sealing ring		
40	942871	1	• • Clevis pin		
41	951924	1	• • Spring pin		
42	955296	2	• Hexagon screw		
43	941907	2	• Spring washer		
44	873149	1	• Bracket		
45	925262	1	• O-ring		
46	945444	6	• Flange screw		
47	955894	2	• Washer		
48	852074	1	• Cable attachment		
49	21471054	1	• Bracket		
50	819068	1	• Washer		
51	955246	2	• Hexagon screw		
52	940090	2	• Washer		
53	946577	2	• Lock nut		
54	852363	1	• Intermediate lever		
55	955270	2	• Hexagon screw		

120S-E

REF	PART NO.	QTY	DESCRIPTION	SEE SEC.	NOTES
56	955948	2	• Toothed washer		
57	955781	2	• Hexagon nut		
58	(840312)	1	• Screw		Obsolete part
59	955892	1	• Washer		
60	17276	1	• Split pin		
61	873087	1	• Dipstick		
62	925055	1	• O-ring		
63	1140097	1	• Ball valve		
64	873173	1	• Nipple		
65	947626	1	• Gasket		
66	873317	1	• Nipple		
67	946541	3	• Hex. socket screw		
68	941670	3	• Washer		
69	852719	1	• Intermediate section		
70		1	• Sealing strip		Included in mounting kit 854934.
71	853892	1	Gasket		Included in mounting kit 854934., Included in complete drive.
72	873126	1	Tensioning ring		Included in complete drive.
73	946730	10	Hexagon screw		Included in complete drive.
74	941670	10	Washer		Included in complete drive.
75	861538	1	Bracket		
76	963582	2	Screw		L=35mm
77	946441	2	Flange screw		L=20mm
77A	1594095	2	Washer		
77B	971095	2	Flange nut		
78	853095	2	Washer		
79	858161	1	Rubber element		
79A	861539	1	Adjusting screw		
80	940280	1	Spring washer		
81	971072	1	Hexagon nut		
82		2	Hose clamp	331	
83		1	Hose	331	