

Circulate to:



Sales Manager



Accounting



Service Manager



Technician



Parts Manager

RideGuide Steering Conversion Kits

Situation

RideGuide Steering components will no longer be available. In place of those systems, Mercury Precision Parts offers Zero Torque Feedback steering kits as replacements for either helms or cables. Some existing steering wheels are not compatible with the new Zero Torque helm (e.g. steering wheels with a square taper will not properly fit on the round Zero Torque helm). Please verify on re-assembly that the steering wheel properly fits into the new helm.

Example:

If a RideGuide helm rack and pinion assembly (PN 66800AX) needs replacement, it may be replaced with PN 889937QXX (dependent on cable length) complete steering kit.

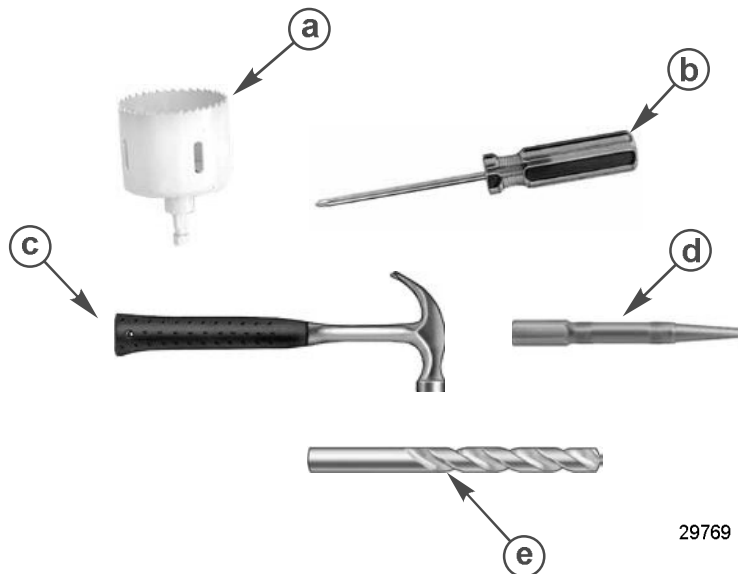
Key Points:

- If the RideGuide helm needs replacement, replace the helm and cable with a new "Q" level complete steering kit.
- If the RideGuide cable needs replacement, replace the helm and cable with a new "Q" level complete steering kit.

THE INFORMATION IN THIS DOCUMENT IS CONFIDENTIAL AND PROTECTED BY COPYRIGHT AND IS THE PROPERTY OF MERCURY MARINE.

This document is provided for the sole and exclusive use of the original recipient as prescribed by Mercury Marine and may not be distributed or copied, digitally or otherwise, without the prior written consent of Mercury Marine.

- The "Q" level complete steering kit includes a template for positioning the new helm.



Tools required

- a** - 3 1/4" hole saw with 1/4" pilot bit
b - Phillips screwdriver
c - Hammer

- d** - Center punch
e - 3/8" drill bit



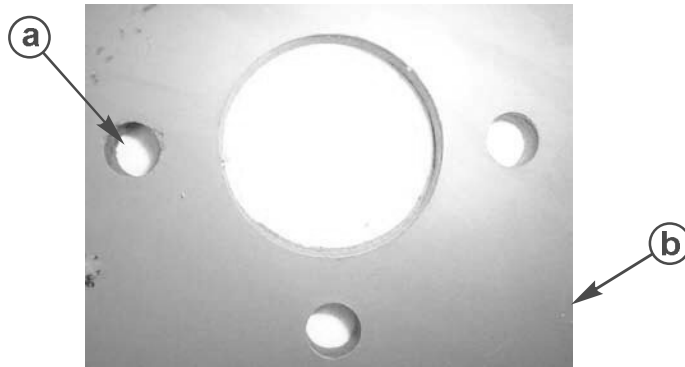
Bill of material

Qty.	Description	Part Number
3	10-32 x 1 1/4" Phillips flathead machine screw	1032125
3	10-32 Rubber well nut for 3/8"	93495A190
1	RideGuide conversion centering jig	RGPLATE

THE INFORMATION IN THIS DOCUMENT IS CONFIDENTIAL AND PROTECTED BY COPYRIGHT AND IS THE PROPERTY OF MERCURY MARINE.

This document is provided for the sole and exclusive use of the original recipient as prescribed by Mercury Marine and may not be distributed or copied, digitally or otherwise, without the prior written consent of Mercury Marine.

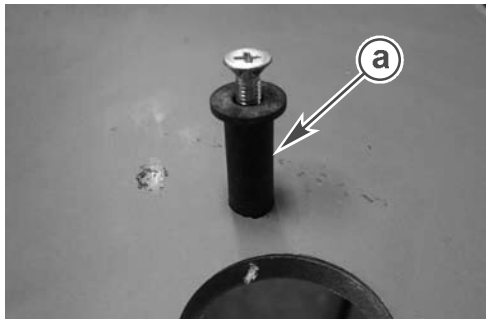
1. Remove RideGuide assembly from dash. Wipe surface and remove all debris from work surface.



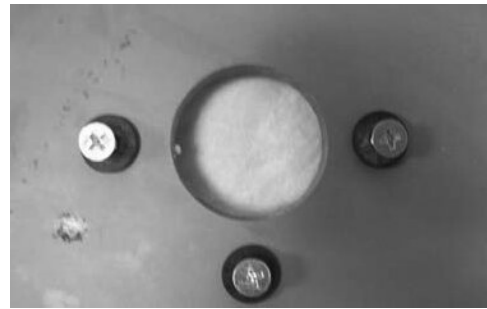
29772

- a** - 3/8 existing hole from previous RideGuide installation
- b** - Existing dash from boat after RideGuide is removed

2. Using supplied 10-32 x 1-1/4 Phillips flathead machine screw and rubber well nuts. Insert three assemblies into the existing 3/8" holes. It is recommended to slightly thread the 10-32 x 1-1/4 Phillips flathead machine screw into the well nut to assist in seating the well nut into the 3/8" hole.



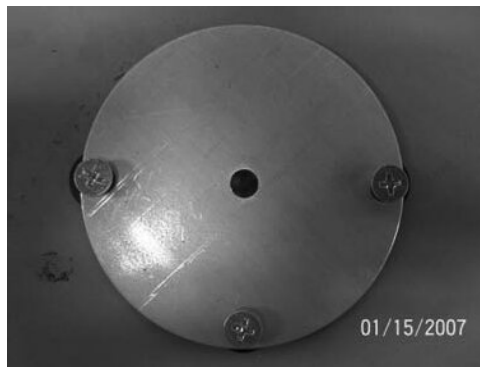
29773



29774

- a** - Supplies rubber well nut and 10-32 x 1-1/4 machine screw

3. Once all three well nuts are installed, remove the 10-32 x 1-1/4" Phillips flathead machine screw.



29775

THE INFORMATION IN THIS DOCUMENT IS CONFIDENTIAL AND PROTECTED BY COPYRIGHT AND IS THE PROPERTY OF MERCURY MARINE.

This document is provided for the sole and exclusive use of the original recipient as prescribed by Mercury Marine and may not be distributed or copied, digitally or otherwise, without the prior written consent of Mercury Marine.

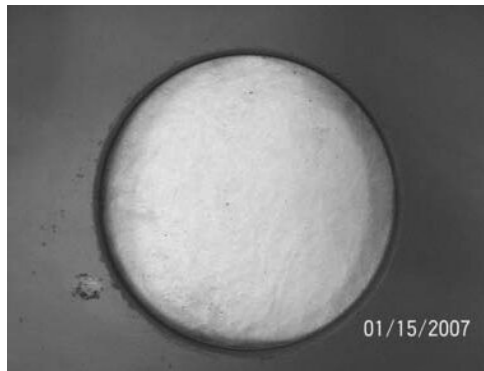
4. Install RideGuide conversion centering jig and using the supplied 10-32 x 1-1/4" Phillips flathead machine screw lightly tighten down until guide assembly does not move. The flathead screw will self-center the jig to the 3/8" existing holes.

NOTE: The supplied rubber well nut is designed to wedge itself into the existing 3/8" hole. Take care not to over-tighten the machine screw and damage the brass sleeve in the well nut.



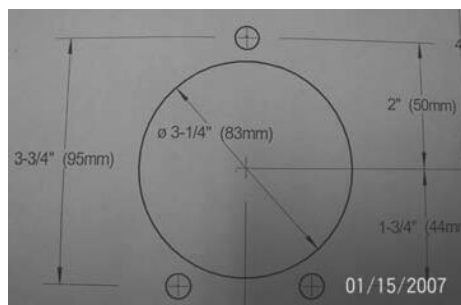
29776

5. Using a 3-1/4" hole saw with a 1/4" pilot bit, carefully drill out the new mounting hole.



29777

6. Remove any excess debris and prepare to set up the mounting template for the X34 (X35) mounting hardware.



29778

7. Using supplied drill template, center on new 3-1/4" hole and temporarily fix to dash. It is helpful to shine a light from the back side to make alignment of the template easier. Using a center punch mark the three new mounting holes.

NOTE: From this step please refer to the specific mounting instructions, supplied with the kit, for clarification on the orientation of the bracket and new mounting holes.

THE INFORMATION IN THIS DOCUMENT IS CONFIDENTIAL AND PROTECTED BY COPYRIGHT AND IS THE PROPERTY OF MERCURY MARINE.

This document is provided for the sole and exclusive use of the original recipient as prescribed by Mercury Marine and may not be distributed or copied, digitally or otherwise, without the prior written consent of Mercury Marine.

Parts Required:

The following is a list of RideGuide cables and helms which may be replaced with new "Q" level complete steering kits.

Helm Part Number 44588A

Rotary			NFB Std Rotary	
Cable Part Number	Description		New Part Number	Description
11110A 8	ROTARY STEERING CABLE ASSEMBL	CABLE ASSY-8 FT	889933Q08	+ACCURA 08 ZEROTORQUE STR KIT
11110A 9	ROTARY STEERING CABLE ASSEMBL	CABLE ASSY-9 FT	889933Q09	+ACCURA 09 ZEROTORQUE STR KIT
11110A 10	ROTARY STEERING CABLE ASSEMBL	CABLE ASSY-10 FT	889933Q010	+ACCURA 10 ZEROTORQUE STR KIT
11110A 11	ROTARY STEERING CABLE ASSEMBL	CABLE ASSY-11 FT	889933Q011	+ACCURA 11 ZEROTORQUE STR KIT
11110A 12	ROTARY STEERING CABLE ASSEMBL	CABLE ASSY-12 FT	889933Q012	+ACCURA 12 ZEROTORQUE STR KIT
11110A 13	ROTARY STEERING CABLE ASSEMBL	CABLE ASSY-13 FT	889933Q013	+ACCURA 13 ZEROTORQUE STR KIT
11110A 14	ROTARY STEERING CABLE ASSEMBL	CABLE ASSY-14 FT	889933Q014	+ACCURA 14 ZEROTORQUE STR KIT
11110A 15	ROTARY STEERING CABLE ASSEMBL	CABLE ASSY-15 FT	889933Q015	+ACCURA 15 ZEROTORQUE STR KIT
11110A 16	ROTARY STEERING CABLE ASSEMBL	CABLE ASSY-16 FT	889933Q016	+ACCURA 16 ZEROTORQUE STR KIT
11110A 17	ROTARY STEERING CABLE ASSEMBL	CABLE ASSY-17 FT	889933Q017	+ACCURA 17 ZEROTORQUE STR KIT
11110A 18	ROTARY STEERING CABLE ASSEMBL	CABLE ASSY-18 FT	889933Q018	+ACCURA 18 ZEROTORQUE STR KIT
11110A 19	ROTARY STEERING CABLE ASSEMBL	CABLE ASSY-19 FT	889933Q019	+ACCURA 19 ZEROTORQUE STR KIT
11110A 20	ROTARY STEERING CABLE ASSEMBL	CABLE ASSY-20 FT	889933Q020	+ACCURA 20 ZEROTORQUE STR KIT

Helm Part Number 44588A

Rotary Extended Life			NFB Std Rotary	
Cable Part Number	Description		New Part Number	Description
828012A 8	+CABLE ASY-ROTARY (8 FT)	CABLE ASSY-8 FT	889933Q08	+ACCURA 08 ZEROTORQUE STR KIT
828012A 9	+CABLE ASY-ROTARY (9 FT)	CABLE ASSY-9 FT	889933Q09	+ACCURA 09 ZEROTORQUE STR KIT
828012A 10	+CABLE ASY-ROTARY (10 FT)	CABLE ASSY-10 FT	889933Q10	+ACCURA 10 ZEROTORQUE STR KIT
828012A 11	+CABLE ASY-ROTARY (11 FT)	CABLE ASSY-11 FT	889933Q11	+ACCURA 11 ZEROTORQUE STR KIT
828012A 12	+CABLE ASY-ROTARY (12 FT)	CABLE ASSY-12 FT	889933Q12	+ACCURA 12 ZEROTORQUE STR KIT

THE INFORMATION IN THIS DOCUMENT IS CONFIDENTIAL AND PROTECTED BY COPYRIGHT AND IS THE PROPERTY OF MERCURY MARINE.

This document is provided for the sole and exclusive use of the original recipient as prescribed by Mercury Marine and may not be distributed or copied, digitally or otherwise, without the prior written consent of Mercury Marine.

Rotary Extended Life			NFB Std Rotary	
Cable Part Number	Description		New Part Number	Description
828012A 13	+CABLE ASY-ROTARY (13 FT)	CABLE ASSY-13 FT	889933Q13	+ACCURA 13 ZEROTORQUE STR KIT
828012A 14	+CABLE ASY-ROTARY (14 FT)	CABLE ASSY-14 FT	889933Q14	+ACCURA 14 ZEROTORQUE STR KIT
828012A 15	+CABLE ASY-ROTARY (15 FT)	CABLE ASSY-15 FT	889933Q15	+ACCURA 15 ZEROTORQUE STR KIT
828012A 16	+CABLE ASY-ROTARY (16 FT)	CABLE ASSY-16 FT	889933Q16	+ACCURA 16 ZEROTORQUE STR KIT
828012A 17	+CABLE ASY-ROTARY (17 FT)	CABLE ASSY-17 FT	889933Q17	+ACCURA 17 ZEROTORQUE STR KIT
828012A 18	+CABLE ASY-ROTARY (18 FT)	CABLE ASSY-18 FT	889933Q18	+ACCURA 18 ZEROTORQUE STR KIT
828012A 19	+CABLE ASY-ROTARY (19 FT)	CABLE ASSY-19 FT	889933Q19	+ACCURA 19 ZEROTORQUE STR KIT
828012A 20	+CABLE ASY-ROTARY (20 FT)	CABLE ASSY-20 FT	889933Q20	+ACCURA 20 ZEROTORQUE STR KIT

Helm Part Number 13762A__

Rotary Dual Cable			NFB Std Rotary Dual Cable	
Cable Part Number	Description		New Part Number	Description
11110A__ Series Cable or 828012A__ Series Cable	+CABLE ASY-ROTARY (8 FT)	CABLE ASSY-8 FT	889932Q08	+ACCURA 08 ZEROTORQUE STR KIT
	+CABLE ASY-ROTARY (9 FT)	CABLE ASSY-9 FT	889932Q09	+ACCURA 09 ZEROTORQUE STR KIT
	+CABLE ASY-ROTARY (10 FT)	CABLE ASSY-10 FT	889932Q10	+ACCURA 10 ZEROTORQUE STR KIT
	+CABLE ASY-ROTARY (11 FT)	CABLE ASSY-11 FT	889932Q11	+ACCURA 11 ZEROTORQUE STR KIT
	+CABLE ASY-ROTARY (12 FT)	CABLE ASSY-12 FT	889932Q12	+ACCURA 12 ZEROTORQUE STR KIT
	+CABLE ASY-ROTARY (13 FT)	CABLE ASSY-13 FT	889932Q13	+ACCURA 13 ZEROTORQUE STR KIT
	+CABLE ASY-ROTARY (14 FT)	CABLE ASSY-14 FT	889932Q14	+ACCURA 14 ZEROTORQUE STR KIT
	+CABLE ASY-ROTARY (15 FT)	CABLE ASSY-15 FT	889932Q15	+ACCURA 15 ZEROTORQUE STR KIT
	+CABLE ASY-ROTARY (16 FT)	CABLE ASSY-16 FT	889932Q16	+ACCURA 16 ZEROTORQUE STR KIT
	+CABLE ASY-ROTARY (17 FT)	CABLE ASSY-17 FT	889932Q17	+ACCURA 17 ZEROTORQUE STR KIT
	+CABLE ASY-ROTARY (18 FT)	CABLE ASSY-18 FT	889932Q18	+ACCURA 18 ZEROTORQUE STR KIT
	+CABLE ASY-ROTARY (19 FT)	CABLE ASSY-19 FT	889932Q19	+ACCURA 19 ZEROTORQUE STR KIT
	+CABLE ASY-ROTARY (20 FT)	CABLE ASSY-20 FT	889932Q20	+ACCURA 20 ZEROTORQUE STR KIT

THE INFORMATION IN THIS DOCUMENT IS CONFIDENTIAL AND PROTECTED BY COPYRIGHT AND IS THE PROPERTY OF MERCURY MARINE.

This document is provided for the sole and exclusive use of the original recipient as prescribed by Mercury Marine and may not be distributed or copied, digitally or otherwise, without the prior written consent of Mercury Marine.

Helm Part Number 66800A__

Rack			NFB Std Rack	
Cable Part Number	Description		New Part Number	Description
11111A 9	STEERING CABLE ASY-HEAVY DUTY	CABLE ASSY-9 FT	889937Q09	+ACCUTECH 09 RACK/PIN STR KIT
11111A 11	STEERING CABLE ASY-HEAVY DUTY	CABLE ASSY-11 FT	889937Q11	+ACCUTECH 11 RACK/PIN STR KIT
11111A 12	STEERING CABLE ASY-HEAVY DUTY	CABLE ASSY-12 FT	889937Q12	+ACCUTECH 12 RACK/PIN STR KIT
11111A 13	STEERING CABLE ASY-HEAVY DUTY	CABLE ASSY-13 FT	889937Q13	+ACCUTECH 13 RACK/PIN STR KIT
11111A 14	STEERING CABLE ASY-HEAVY DUTY	CABLE ASSY-14 FT	889937Q14	+ACCUTECH 14 RACK/PIN STR KIT
11111A 15	STEERING CABLE ASY-HEAVY DUTY	CABLE ASSY-15 FT	889937Q15	+ACCUTECH 15 RACK/PIN STR KIT
11111A 16	STEERING CABLE ASY-HEAVY DUTY	CABLE ASSY-16 FT	889937Q16	+ACCUTECH 16 RACK/PIN STR KIT
11111A 17	STEERING CABLE ASY-HEAVY DUTY	CABLE ASSY-17 FT	889937Q17	+ACCUTECH 17 RACK/PIN STR KIT
11111A 18	STEERING CABLE ASY-HEAVY DUTY	CABLE ASSY-18 FT	889937Q18	+ACCUTECH 18 RACK/PIN STR KIT
11111A 19	STEERING CABLE ASY-HEAVY DUTY	CABLE ASSY-19 FT	889937Q19	+ACCUTECH 19 RACK/PIN STR KIT
11111A 20	STEERING CABLE ASY-HEAVY DUTY	CABLE ASSY-20 FT	889937Q20	+ACCUTECH 20 RACK/PIN STR KIT
11111A 21	STEERING CABLE ASY-HEAVY DUTY	CABLE ASSY-21 FT	889937Q21	ACCUTECH 21 RACK/PIN STR KIT
11111A 22	STEERING CABLE ASY-HEAVY DUTY	CABLE ASSY-22 FT	889937Q22	ACCUTECH 22 RACK/PIN STR KIT
11111A 23	STEERING CABLE ASY-HEAVY DUTY	CABLE ASSY-23 FT	889937Q23	ACCUTECH 23 RACK/PIN STR KIT
11111A 24	STEERING CABLE ASY-HEAVY DUTY	CABLE ASSY-24 FT	889937Q24	ACCUTECH 24 RACK/PIN STR KIT
11111A 25	STEERING CABLE ASY-HEAVY DUTY	CABLE ASSY-25 FT	889937Q25	ACCUTECH 25 RACK/PIN STR KIT
11111A 26	STEERING CABLE ASY-HEAVY DUTY	CABLE ASSY-26 FT	889937Q26	ACCUTECH 26 RACK/PIN STR KIT
11111A 27	STEERING CABLE ASY-HEAVY DUTY	CABLE ASSY-27 FT	889937Q27	ACCUTECH 27 RACK/PIN STR KIT
11111A 28	STEERING CABLE ASY-HEAVY DUTY	CABLE ASSY-28 FT	889937Q28	ACCUTECH 28 RACK/PIN STR KIT
11111A 29	STEERING CABLE ASY-HEAVY DUTY	CABLE ASSY-29 FT	889937Q29	ACCUTECH 29 RACK/PIN STR KIT
11111A 30	STEERING CABLE ASY-HEAVY DUTY	CABLE ASSY-30 FT	889937Q30	ACCUTECH 30 RACK/PIN STR KIT
11111A 32	STEERING CABLE ASY-HEAVY DUTY	CABLE ASSY-32 FT	889937Q32	ACCUTECH 32 RACK/PIN STR KIT

THE INFORMATION IN THIS DOCUMENT IS CONFIDENTIAL AND PROTECTED BY COPYRIGHT AND IS THE PROPERTY OF MERCURY MARINE.

This document is provided for the sole and exclusive use of the original recipient as prescribed by Mercury Marine and may not be distributed or copied, digitally or otherwise, without the prior written consent of Mercury Marine.

RideGuide Steering Conversion Kits

Rack			NFB Std Rack	
Cable Part Number	Description		New Part Number	Description
11111A 34	STEERING CABLE ASY-HEAVY DUTY	CABLE ASSY-34 FT	889937Q34	ACCUTECH 34 RACK/PIN STR KIT
11111A 36	STEERING CABLE ASY-HEAVY DUTY	CABLE ASSY-36 FT	889937Q36	ACCUTECH 36 RACK/PIN STR KIT
11111A 38	STEERING CABLE ASY-HEAVY DUTY	CABLE ASSY-38 FT	889937Q38	ACCUTECH 38 RACK/PIN STR KIT
11111A 40	STEERING CABLE ASY-HEAVY DUTY	CABLE ASSY-40 FT	889937Q40	ACCUTECH 40 RACK/PIN STR KIT
11111A 42	STEERING CABLE ASY-HEAVY DUTY	CABLE ASSY-42 FT	889937Q42	ACCUTECH 42 RACK/PIN STR KIT
11111A 44	STEERING CABLE ASY-HEAVY DUTY	CABLE ASSY-44 FT	889937Q44	ACCUTECH 44 RACK/PIN STR KIT
11111A 46	STEERING CABLE ASY-HEAVY DUTY	CABLE ASSY-46 FT	889937Q46	ACCUTECH 46 RACK/PIN STR KIT
11111A 48	STEERING CABLE ASY-HEAVY DUTY	CABLE ASSY-48 FT	889937Q48	ACCUTECH 48 RACK/PIN STR KIT
11111A 50	STEERING CABLE ASY-HEAVY DUTY	CABLE ASSY-50 FT	889937Q50	ACCUTECH 50 RACK/PIN STR KIT
11111A 52	STEERING CABLE ASY-HEAVY DUTY	CABLE ASSY-52 FT	889937Q52	ACCUTECH 52 RACK/PIN STR KIT
11111A 54	STEERING CABLE ASY-HEAVY DUTY	CABLE ASSY-54 FT	889937Q54	ACCUTECH 54 RACK/PIN STR KIT
11111A 58	STEERING CABLE ASY-HEAVY DUTY	CABLE ASSY-58 FT	889937Q58	ACCUTECH 58 RACK/PIN STR KIT
11111A 60	STEERING CABLE ASY-HEAVY DUTY	CABLE ASSY-60 FT	889937Q60	ACCUTECH 60 RACK/PIN STR KIT

Helm Part Number 66800A

Rack Extended Life			NFB Std Rack	
Cable Part Number	Description		New Part Number	Description
828011A11	STRG CABLE ASY-EXTENDED LIFE	CABLE ASSY-11 FT	889937Q11	+ACCUTECH 11 RACK/PIN STR KIT
828011A12	STRG CABLE ASY-EXTENDED LIFE	CABLE ASSY-12 FT	889937Q12	+ACCUTECH 12 RACK/PIN STR KIT
828011A13	STRG CABLE ASY-EXTENDED LIFE	CABLE ASSY-13 FT	889937Q13	+ACCUTECH 13 RACK/PIN STR KIT
828011A14	STRG CABLE ASY-EXTENDED LIFE	CABLE ASSY-14 FT	889937Q14	+ACCUTECH 14 RACK/PIN STR KIT
828011A15	STRG CABLE ASY-EXTENDED LIFE	CABLE ASSY-15 FT	889937Q15	+ACCUTECH 15 RACK/PIN STR KIT
828011A16	STRG CABLE ASY-EXTENDED LIFE	CABLE ASSY-16 FT	889937Q16	+ACCUTECH 16 RACK/PIN STR KIT
828011A17	STRG CABLE ASY-EXTENDED LIFE	CABLE ASSY-17 FT	889937Q17	+ACCUTECH 17 RACK/PIN STR KIT
828011A18	STRG CABLE ASY-EXTENDED LIFE	CABLE ASSY-18 FT	889937Q18	+ACCUTECH 18 RACK/PIN STR KIT

THE INFORMATION IN THIS DOCUMENT IS CONFIDENTIAL AND PROTECTED BY COPYRIGHT AND IS THE PROPERTY OF MERCURY MARINE.

This document is provided for the sole and exclusive use of the original recipient as prescribed by Mercury Marine and may not be distributed or copied, digitally or otherwise, without the prior written consent of Mercury Marine.

Rack Extended Life			NFB Std Rack	
Cable Part Number	Description		New Part Number	Description
828011A19	STRG CABLE ASY-EXTENDED LIFE	CABLE ASSY-19 FT	889937Q19	+ACCUTECH 19 RACK/PIN STR KIT
828011A20	STRG CABLE ASY-EXTENDED LIFE	CABLE ASSY-20 FT	889937Q20	+ACCUTECH 20 RACK/PIN STR KIT
828011A21	STEERING CABLE-EXTENDED LIFE	CABLE ASSY-21 FT	889937Q21	ACCUTECH 21 RACK/PIN STR KIT
828011A22	STEERING CABLE-EXTENDED LIFE	CABLE ASSY-22 FT	889937Q22	ACCUTECH 22 RACK/PIN STR KIT
828011A23	STEERING CABLE-EXTENDED LIFE	CABLE ASSY-23 FT	889937Q23	ACCUTECH 23 RACK/PIN STR KIT
828011A24	STEERING CABLE-EXTENDED LIFE	CABLE ASSY-24 FT	889937Q24	ACCUTECH 24 RACK/PIN STR KIT
828011A25	STEERING CABLE-EXTENDED LIFE	CABLE ASSY-25 FT	889937Q25	ACCUTECH 25 RACK/PIN STR KIT

THE INFORMATION IN THIS DOCUMENT IS CONFIDENTIAL AND PROTECTED BY COPYRIGHT AND IS THE PROPERTY OF MERCURY MARINE.

This document is provided for the sole and exclusive use of the original recipient as prescribed by Mercury Marine and may not be distributed or copied, digitally or otherwise, without the prior written consent of Mercury Marine.